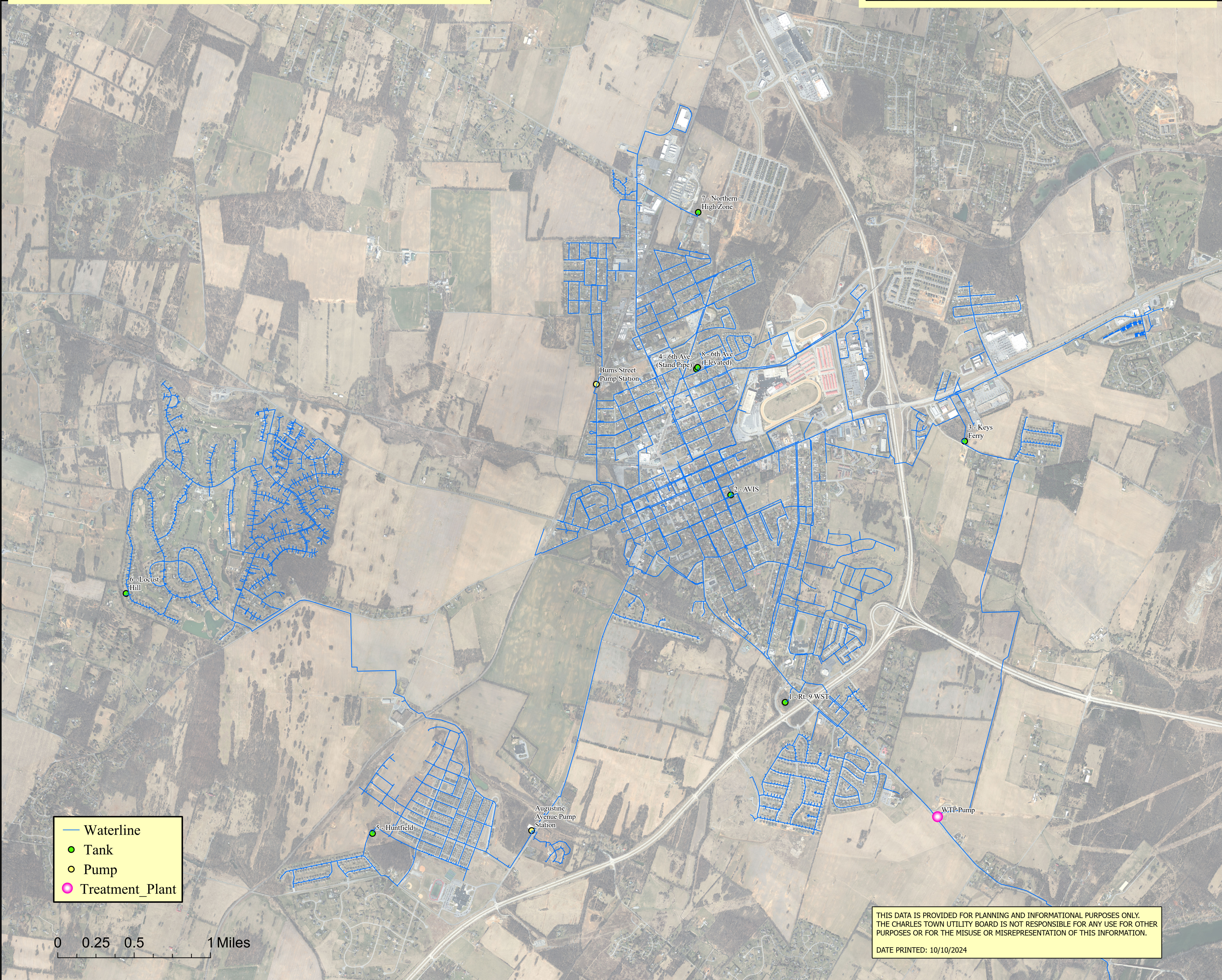


CHARLES TOWN UTILITY BOARD WATER DISTRIBUTION SYSTEM



CAVALAND SUBDIVISION

GLEN HAVEN SUBDIVISION



- Waterline
- Tank
- Pump
- Treatment Plant

0 0.25 0.5 1 Miles

THIS DATA IS PROVIDED FOR PLANNING AND INFORMATIONAL PURPOSES ONLY. THE CHARLES TOWN UTILITY BOARD IS NOT RESPONSIBLE FOR ANY USE FOR OTHER PURPOSES OR FOR THE MISUSE OR MISREPRESENTATION OF THIS INFORMATION. DATE PRINTED: 10/10/2024